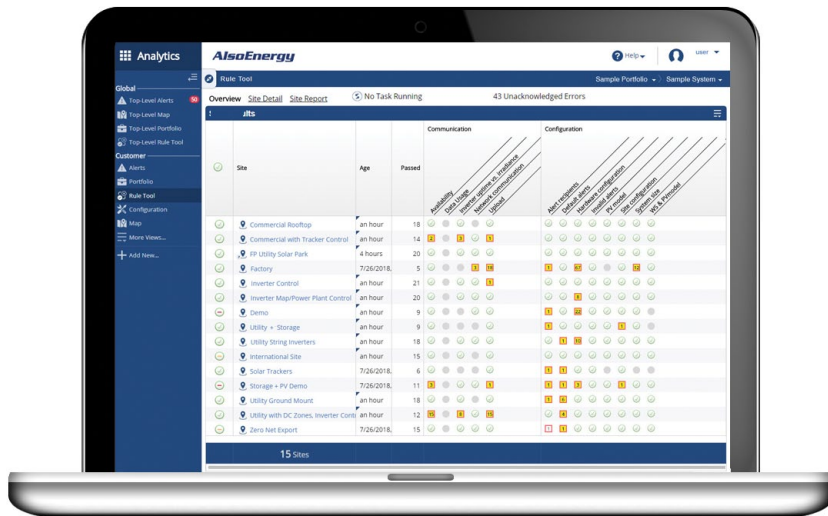


# Diagnostics in the PowerTrack Platform

The PowerTrack Platform includes a suite of Diagnostics tools that look continuously at your data and notify you in real time when attention is needed. Process automation at this level saves you the cost of configuring numerous settings for all the hardware units functioning in distributed energy projects at any given time. It also makes it possible to collect and clean tons of data so that everyone involved with the project can share a single version of the truth.



## Automation

Make sure all systems are correctly configured during implementation and throughout the project lifecycle.

## Communications

Monitor production, site conditions, faults and alarms with the interactive ability to modify system settings as needed.

## Data quality

Gain a better understanding of projects and portfolios with high-frequency data sampling to support diagnostics and analytics.

## Performance

Act on data-driven insights to manage assets efficiently and achieve all financial performance objectives.

## Reveal patterns and trends in the data

Diagnostics tools in PowerTrack are available with AlsoEnergy Residential Solutions, C&I Solutions, Utility Solutions, CMMS Solutions, Asset Management Solutions, and Portfolio Aggregation Solutions.

## Features and Offerings

- Automated site analysis
- Automated capacity tests
- Real-time remote monitoring
- Two-way communication
- Remote network analysis
- Mobile
- PowerNOC